

# Webcast - Tech Day on Friday 2022

## Azure Virtual Desktop / Windows 365 – Cloud PC



Patrick Böck – [patrick.boeck@baseit.at](mailto:patrick.boeck@baseit.at) | Lead Architekt Modern Workplace & Security

**professional.**  
**fast.**  
**secure.**

# Agenda

- Übersicht Windows 365 (W365)
- Übersicht Azure Virtual Desktop (AVD)
- Gegenüberstellung W365 & AVD
- Demo: Deployment von W365
- Zugriffe



# Übersicht Windows 365 (W365) - CloudPC

**baseit**

Webcast: Windows 365 und Azure Virtual Desktop

DaaS (Desktop as a Service)

Personalisiert

Schnell & einfach verfügbar

Zugriff von vielen Endgeräten

Skaliert je nach Bedarf

Fixe Kostenzuordnung

Geringer Management Aufwand (Deployment & Betrieb)

Integration Universal Print

Lizenzierung: Business oder Enterprise



# Übersicht Windows 365 - SKU

Webcast: Windows 365 und Azure Virtual Desktop



## Business und Enterprise

Prozessor	RAM	Storage	Preis
2 vCPU	4 GB	128 GB	€ 28,20
2 vCPU	8 GB	256 GB	€ 45,50
4 vCPU	16 GB	128 GB	€ 60,10
4 vCPU	16 GB	512 GB	€ 92,00
8 vCPU	32 GB	128 GB	€ 112,00
8 vCPU	32 GB	512 GB	€ 143,90



# Übersicht AVD (Azure Virtual Desktop)



Webcast: Windows 365 und Azure Virtual Desktop

Single Session (VDI)

Multi Session (Windows 10 >, Server)

FSLogix

Skalierbarkeit über Automationen

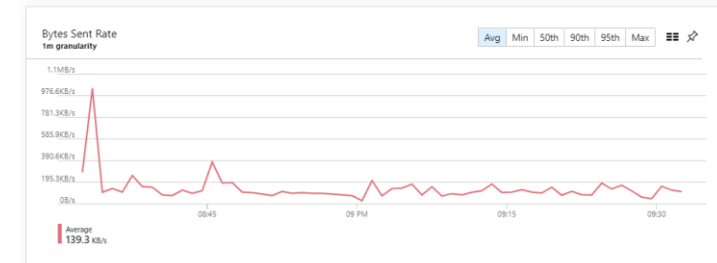
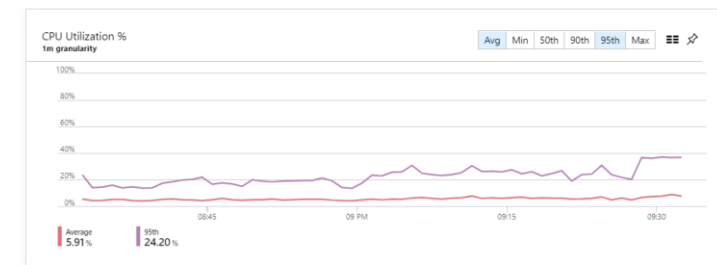
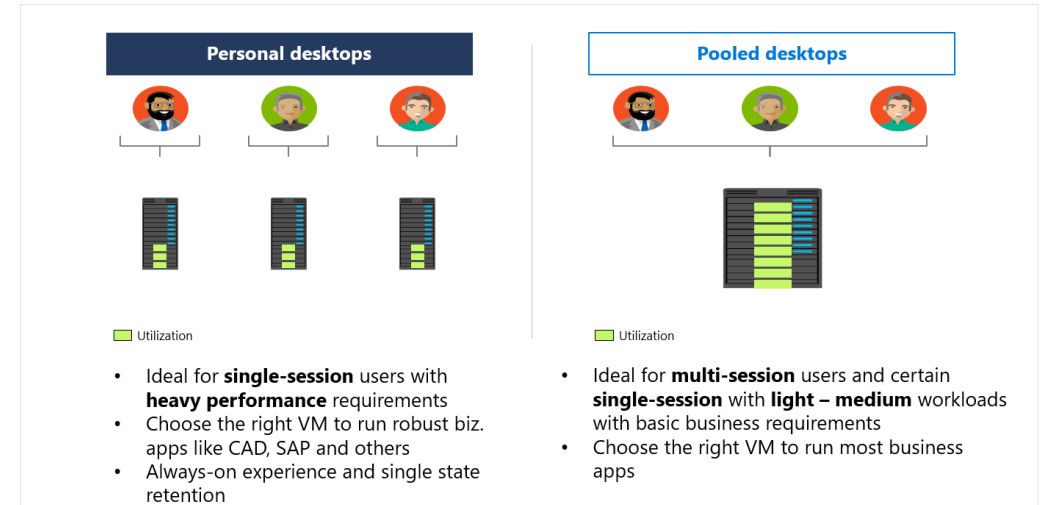
Performance Monitoring (Azure Monitor)

Volle Integration in Onpremise Umgebung

Automatisierbar (CI/CD Pipeline, Biceps, IaaS)

Integration in Citrix, VMware, etc.

Partnersystem (Print, Monitoring, Management)



# Übersicht AVD - Technik

Webcast: Windows 365 und Azure Virtual Desktop

**Management – PaaS**

Diagnostic Services

Gateway

Broker

Load Balancing

**Customer**

- Image
- User Management



Your subscription—your control

Desktops and remote apps



Full Desktop



RemoteApp



Windows 10 Enterprise  
multi-session



Windows 10 Enterprise



Windows Server  
2012 R2 and newer



Windows 7 Enterprise  
Full Desktop

Management and policies



Image, app, and profile  
management



User density, VM  
sizing, and scaling  
policies



User management and  
identity



Networking policies

Managed by Microsoft

Azure Virtual Desktop Service



Clients



Diagnostics



Gateway



Management



Broker



Load balancing

Infrastructure



Compute



Storage

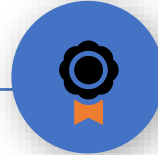


Networking

# Übersicht AVD – Windows Multi Session



Webcast: Windows 365 und Azure Virtual Desktop



## Windows Server 2019 RD Session Host

Scalable multi-user **legacy**  
Windows environment

---

Windows Server 2019

Multiple users

Win32

Office 2019 Perpetual

Long-Term Servicing Channel

## Windows 10 Enterprise session user

Scalable multi-session **modern**  
Windows user experience with  
Windows 10 Enterprise security

Windows 10

Multiple users

Win32, UWP

Microsoft 365

Semi-Annual Channel

## Windows 10 Enterprise

Native single-session **modern**  
Windows experience

---

Windows 10

Single user

Win32, UWP

Microsoft 365

Semi-Annual Channel

# Gegenüberstellung W365 AVD

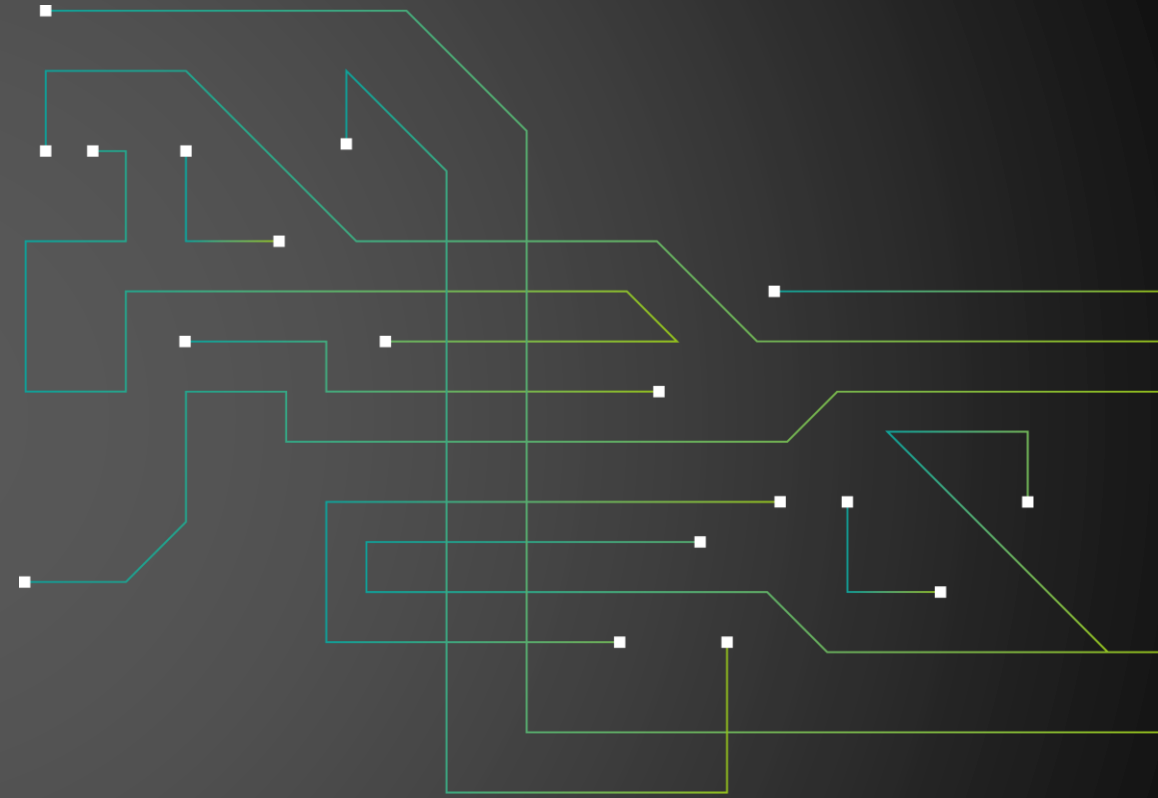


	W365	AVD
Betriebssystem	Win10, Win11, >	Win7 – Win11, Server, >
Typen	Single User	Single User, Multi User
Zielgruppe	Office & User Desktop	Office, Multi-Session, High Performance (+ GPU), IOPS
Zugriff	Website, App	Website, App, Published Application
Management	Endpointmanager	Endpointmanager, Configuration Manager, Citrix, Vmware, andere EMMs
Sicherheit	MFA, Conditional Access, Defender for Endpoint	MFA, Conditional Access, Defender for Endpoint, 3 <sup>rd</sup> Party
Verfügbarkeit	Cloud Only	Azure Regions und AzureStack HCI (OnPrem)
Kosten	Fix, skalierbar	Variable je nach verwendung, skalierbar +/-
Optimiert hinsichtlich	Einfachheit	Flexibilität & Performance





DEMO



**professional.**  
**fast.**  
**secure.**

# Usecases: AVD

Webcast: Windows 365 und Azure Virtual Desktop



Ablöse bestehender VDI/Remote Host Lösungen

- Citrix
- Vmware
- Remote Desktop Sessions

Windows 10/11 Deployment – Testen von Applikationen

Proof of Concepts (Implementierungen)

PAW & Secure Environment (Privileged Access Workstations)

M&A Projekte & Carve In/Out Projekte



# Usecases: W365

Webcast: Windows 365 und Azure Virtual Desktop



Windows 10/11 Arbeitsplätze (COVID)

Zugriff für Externe:

Kunden

Lieferanten

Dienstleister

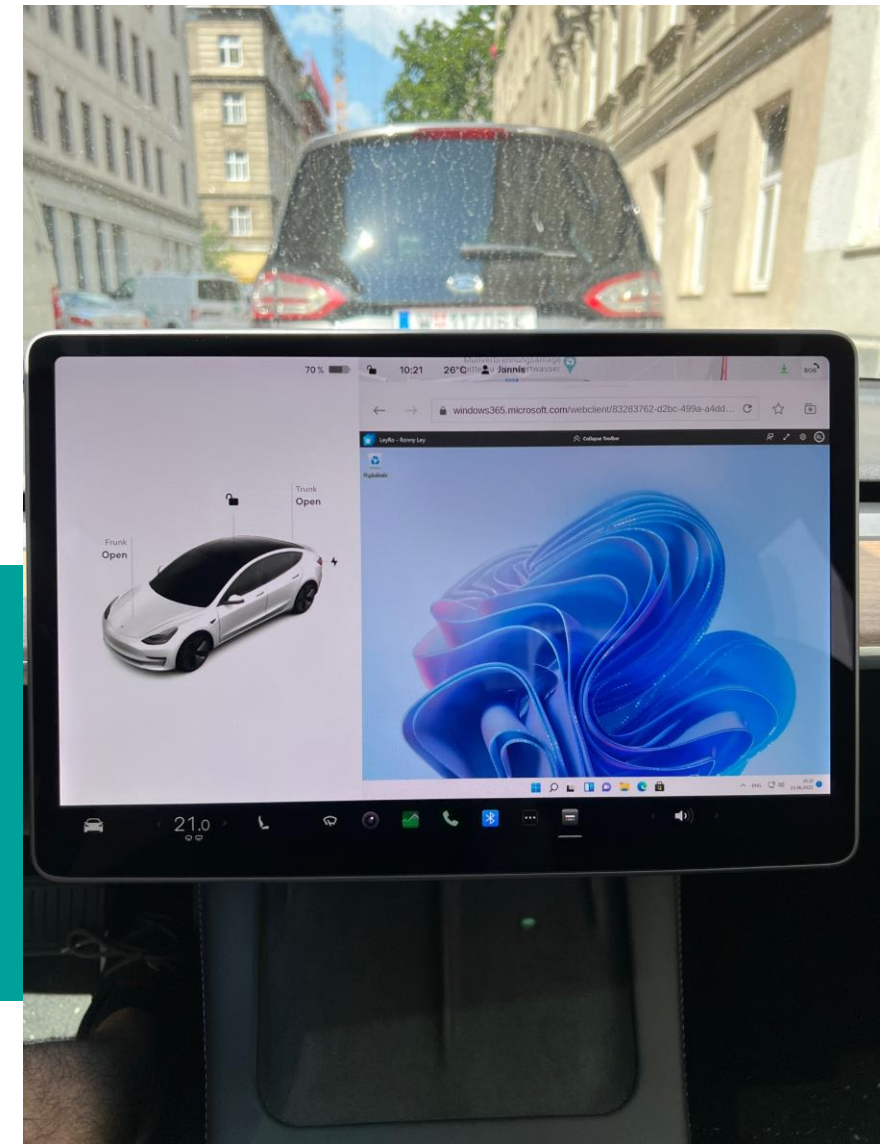
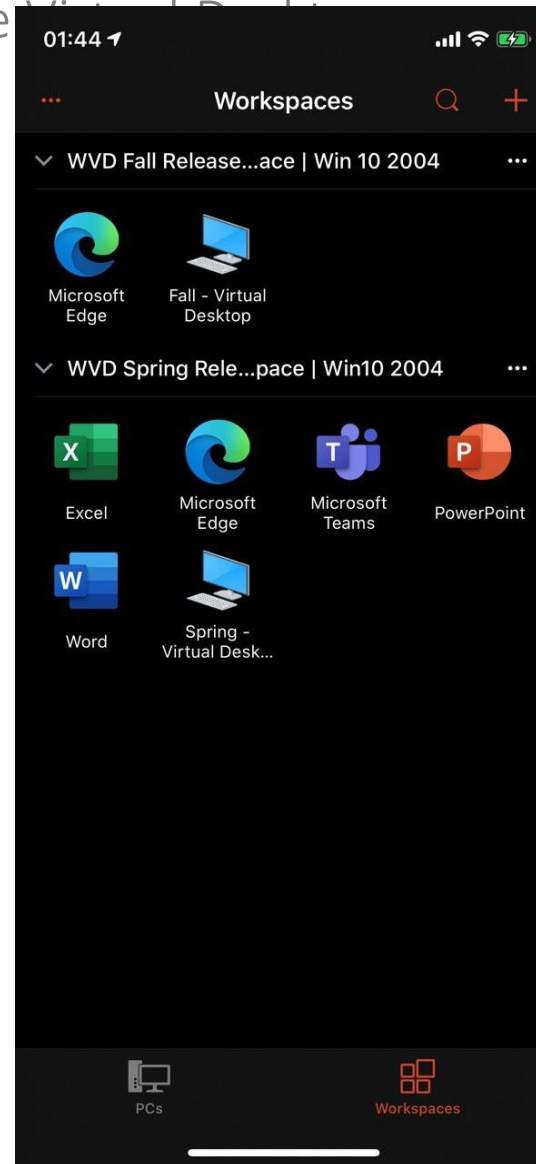
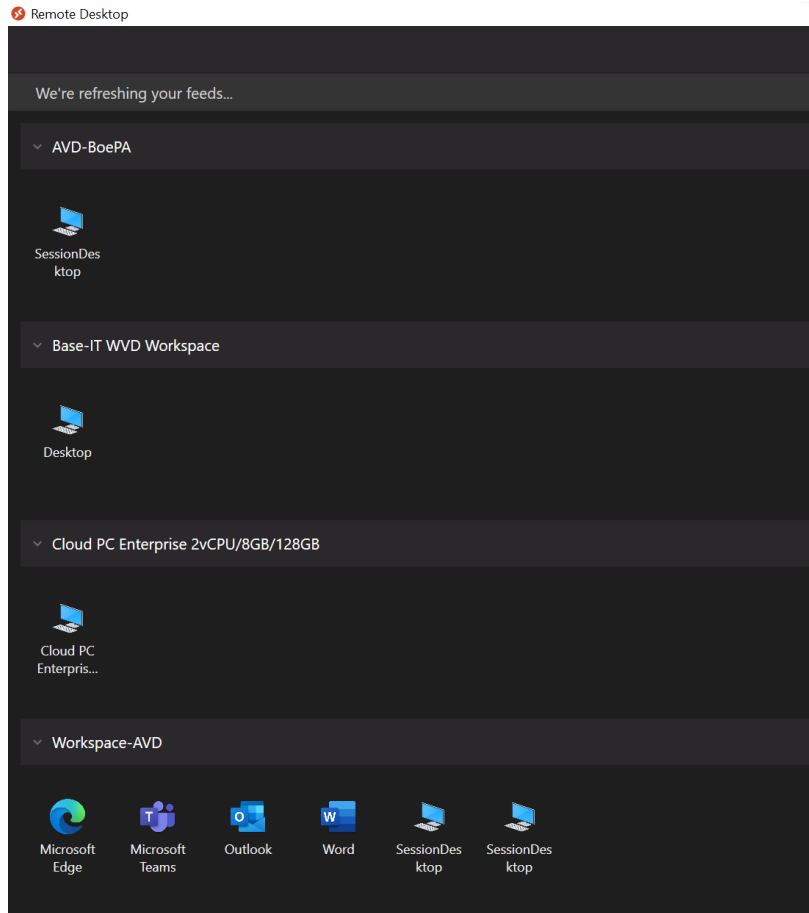
M&A Projekte

Messe & Veranstaltungen

Dateneingabe & Recherche (zeitlich begrenzt)



# Zugriff auf AVD





VIELEN DANK !

patrick.boeck@baseit.at

**professional.**  
**fast.**  
**secure.**